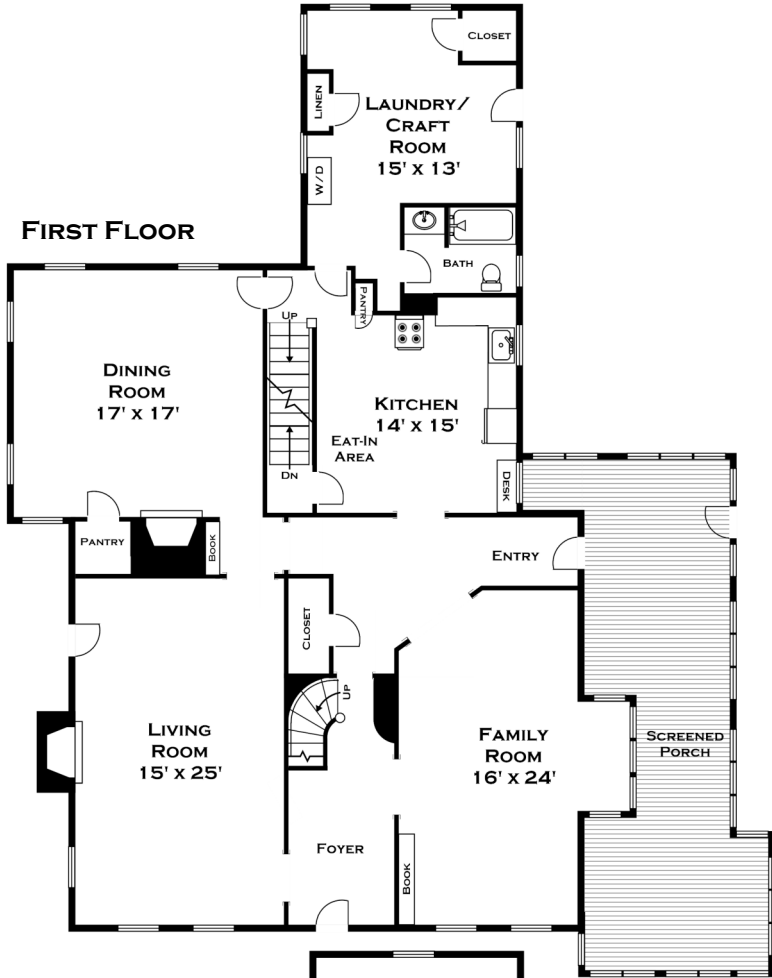
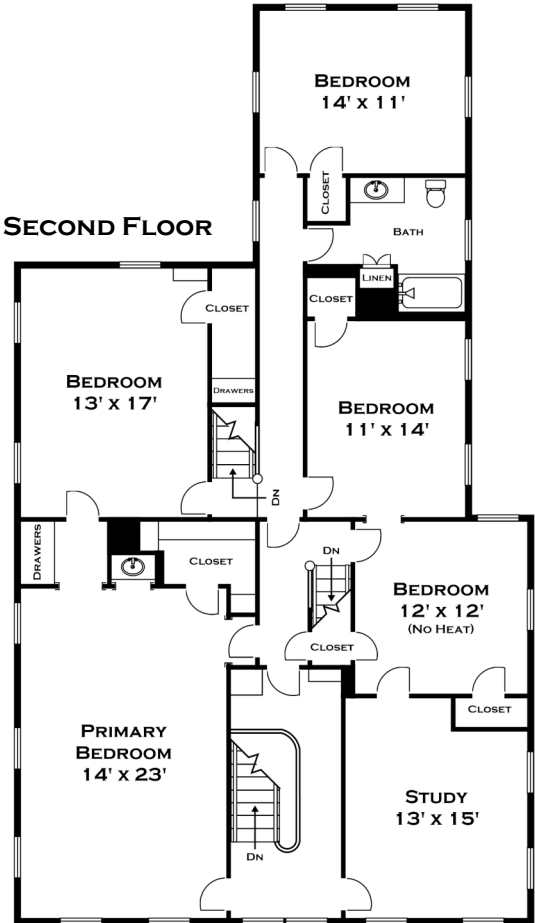


399 CHAPMAN STREET, CANTON

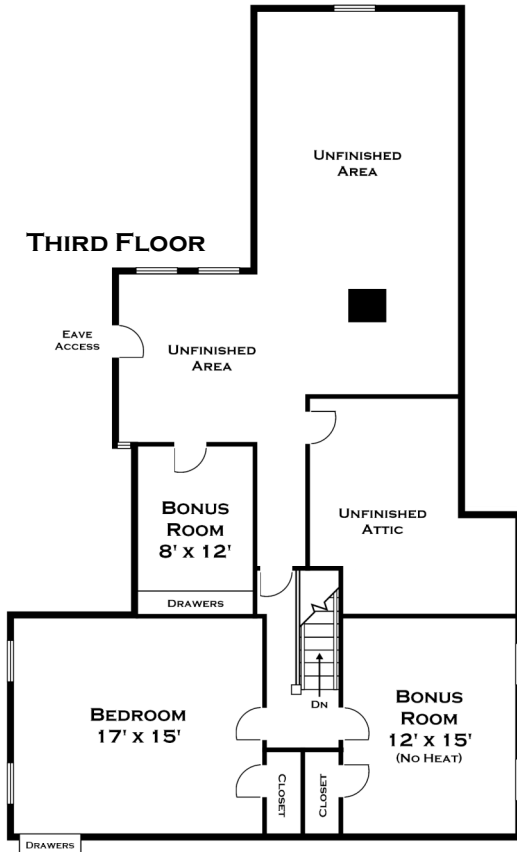
FIRST FLOOR



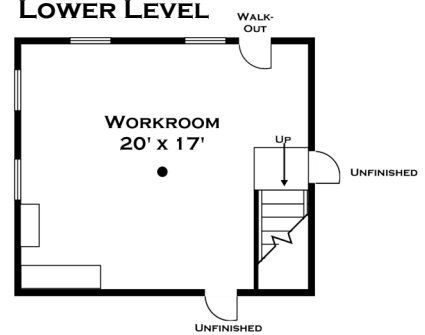
SECOND FLOOR



THIRD FLOOR



LOWER LEVEL



ALL MEASUREMENTS ARE APPROXIMATE AND FOR INFORMATIONAL PURPOSES ONLY—
 NOT DRAWN TO SCALE
 COPYRIGHT © 2022
 BY DORENE HIGGONS

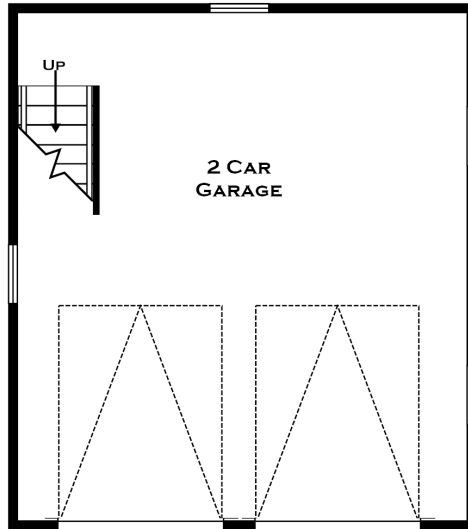


DORENE J HIGGONS
 GRAPHICS/CONSULTING
 781.724.7306
 DORENE.HIGGONS@GMAIL.COM

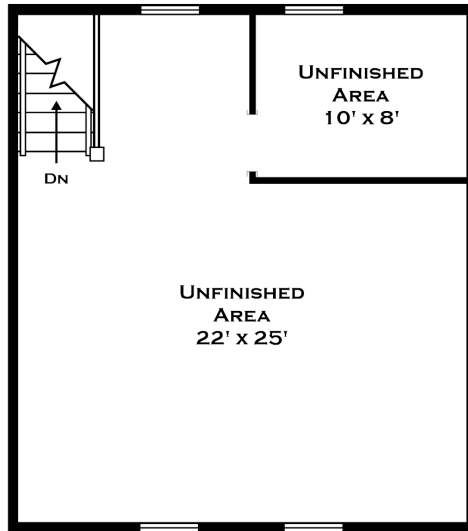
399 CHAPMAN STREET, CANTON

OUT BUILDING

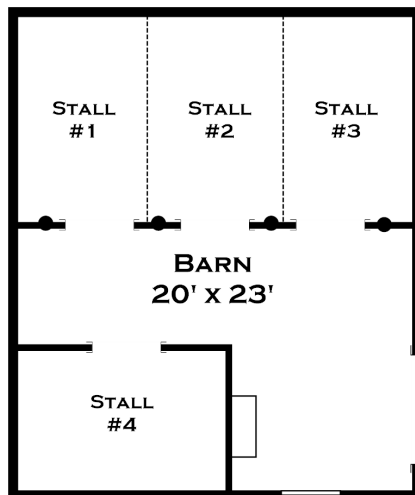
FIRST FLOOR



SECOND FLOOR



LOWER LEVEL



ALL MEASUREMENTS ARE APPROXIMATE AND FOR INFORMATIONAL PURPOSES ONLY--
NOT DRAWN TO SCALE
COPYRIGHT © 2022
BY DORENE HIGGONS



DORENE J HIGGONS
GRAPHICS / CONSULTING
781.724.7306
DORENE.HIGGONS@GMAIL.COM