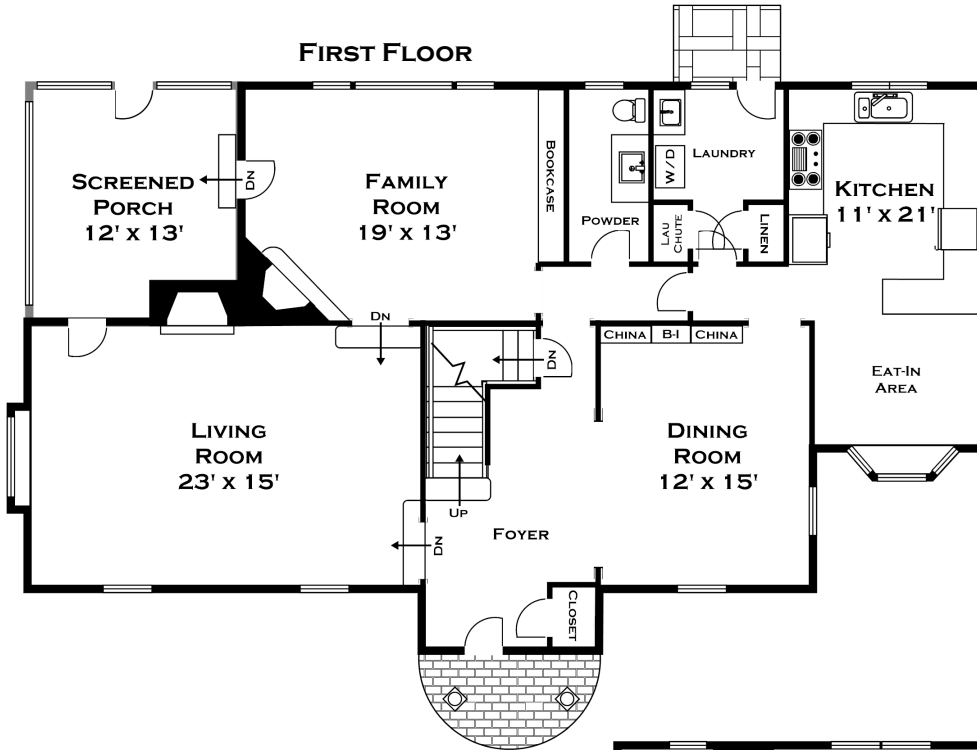
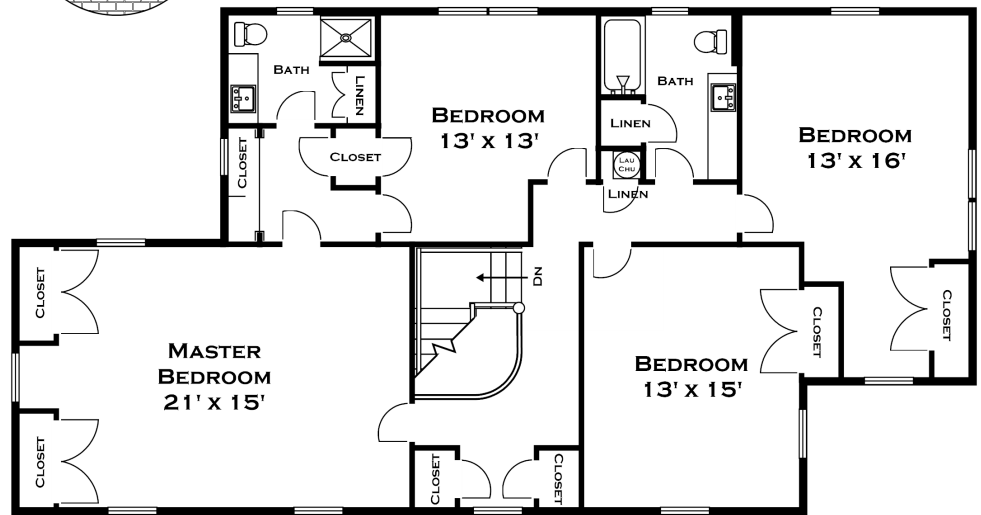


# 376 GLEN ROAD, WESTON MA

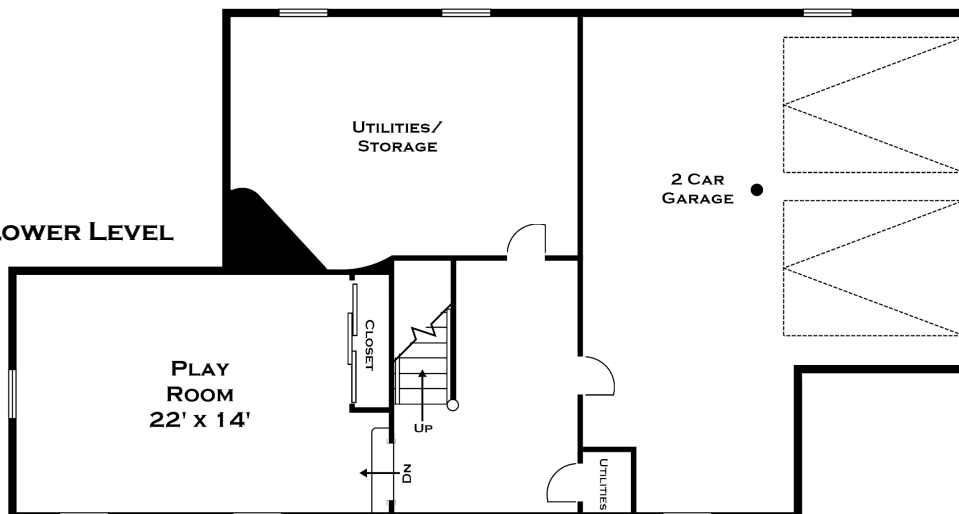
## FIRST FLOOR



## SECOND FLOOR



## LOWER LEVEL



ALL MEASUREMENTS ARE APPROXIMATE AND FOR INFORMATIONAL PURPOSES ONLY— NOT DRAWN TO SCALE  
COPYRIGHT © 2020  
BY DORENE HIGGONS



**DORENE J HIGGONS**  
GRAPHICS / CONSULTING  
781.724.7306  
DORENE.HIGGONS@GMAIL.COM