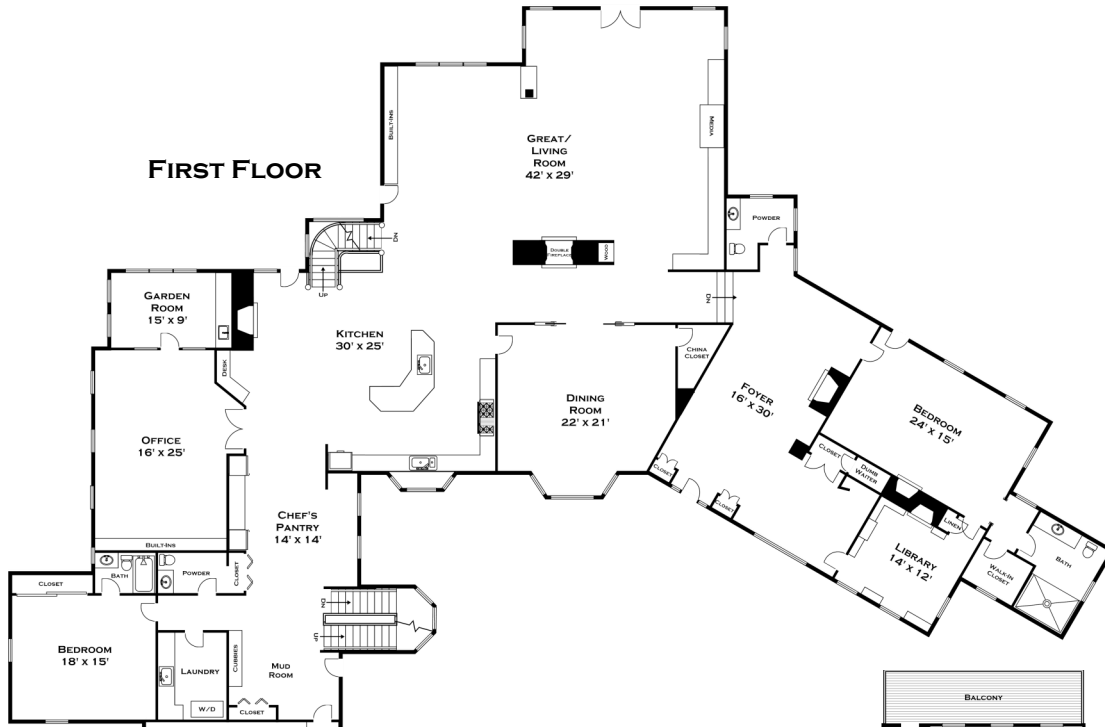
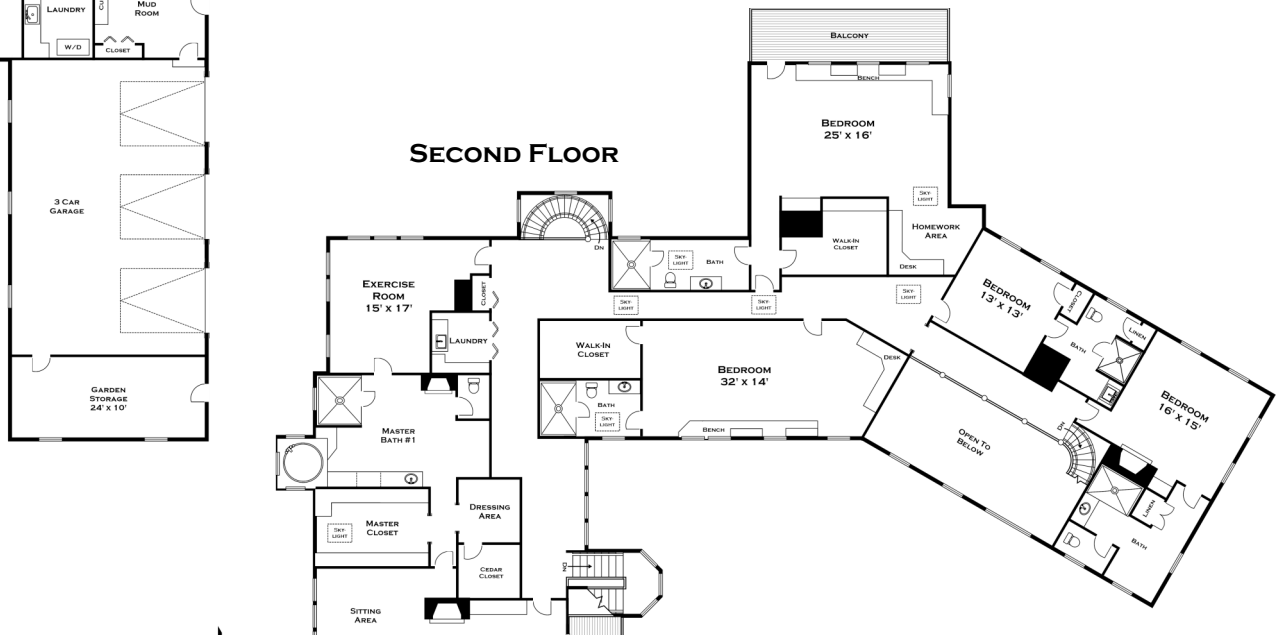


# 36 STRAWBERRY HILL STREET, DOVER MA

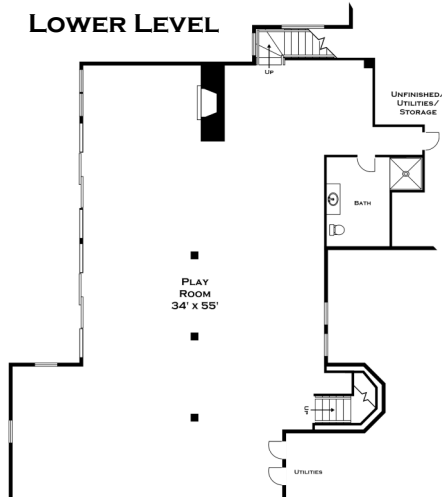
## FIRST FLOOR



## SECOND FLOOR



## LOWER LEVEL



ALL MEASUREMENTS ARE APPROXIMATE AND FOR INFORMATIONAL PURPOSES ONLY— NOT DRAWN TO SCALE



**DORENE J HIGGONS**  
GRAPHICS/CONSULTING  
781.724.7306  
DORENE.HIGGONS@GMAIL.COM