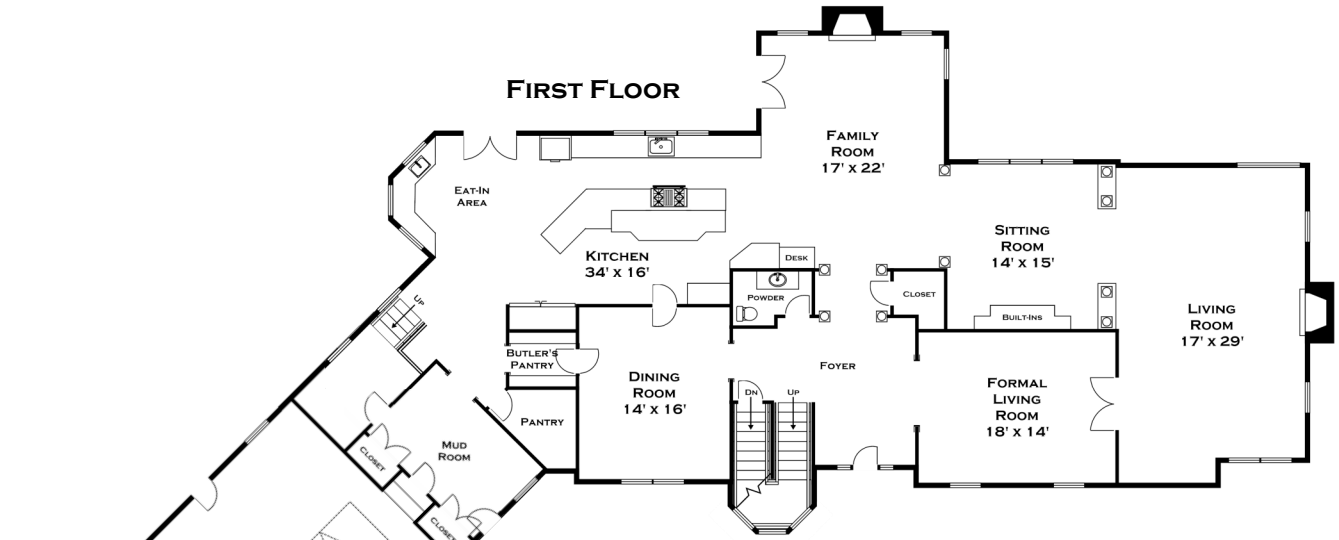
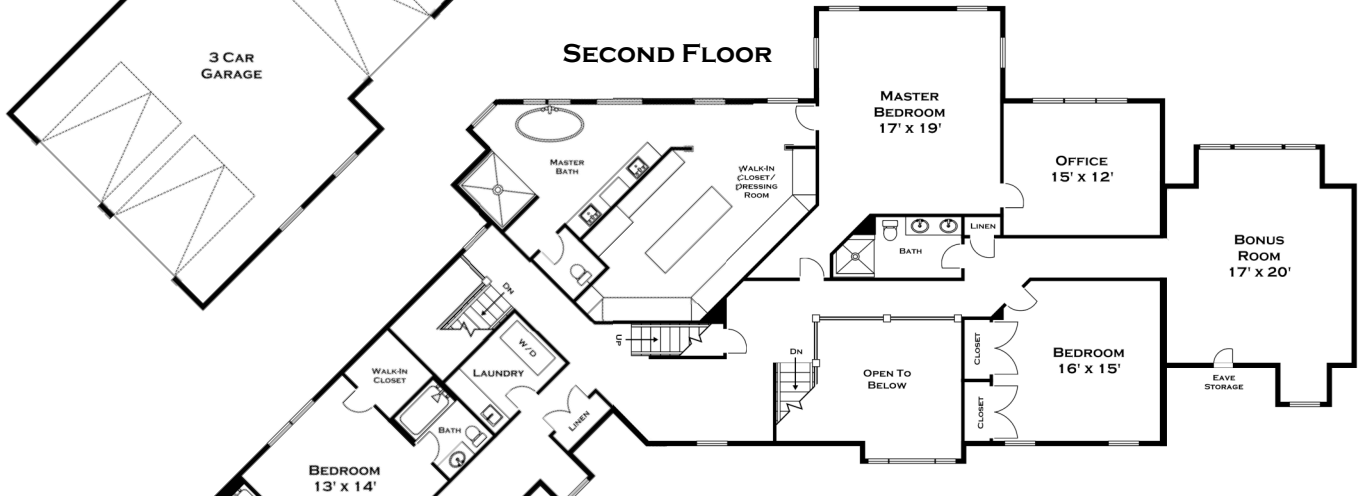


36 MILLER HILL ROAD, DOVER MA

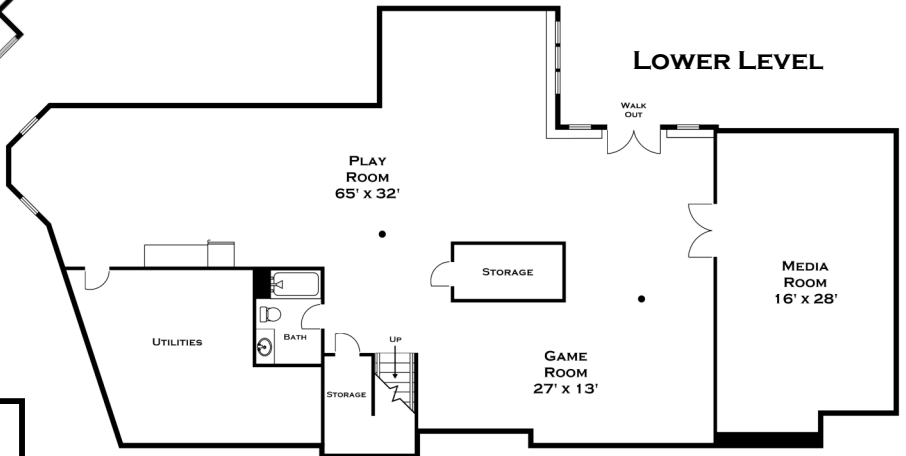
FIRST FLOOR



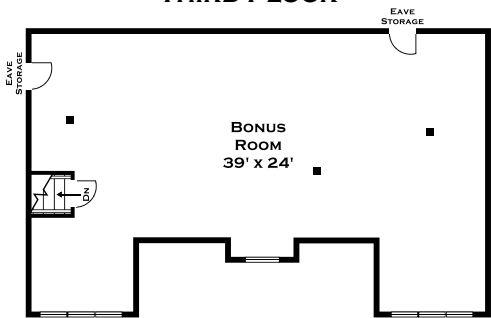
SECOND FLOOR



LOWER LEVEL



THIRD FLOOR



ALL MEASUREMENTS ARE APPROXIMATE AND FOR INFORMATIONAL PURPOSES ONLY—NOT DRAWN TO SCALE



DORENE J HIGGONS
GRAPHICS/CONSULTING
781.724.7306
DORENE.HIGGONS@GMAIL.COM