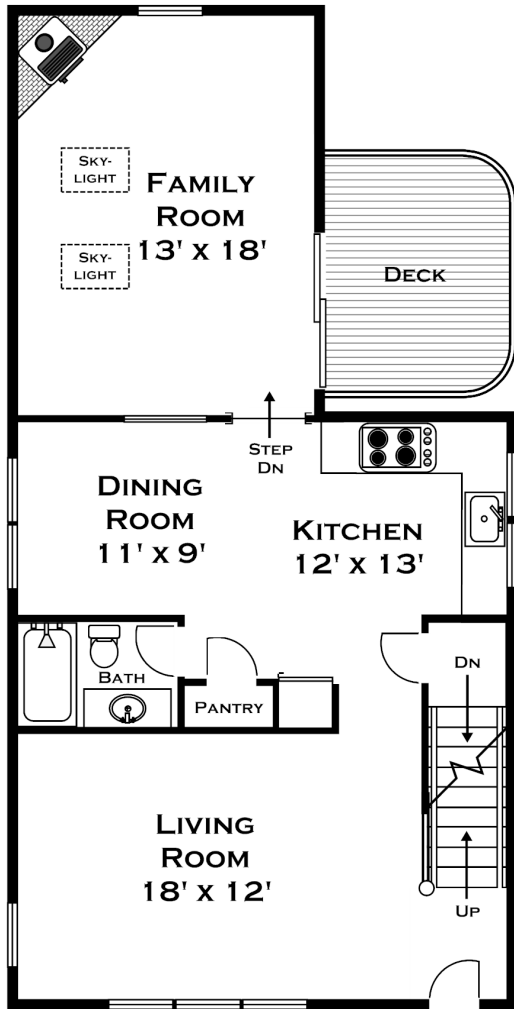
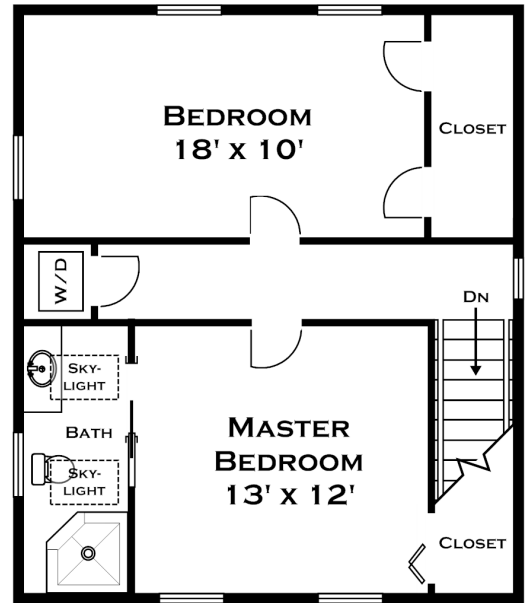


12 HIGH STREET, WEST BOYLSTON MA

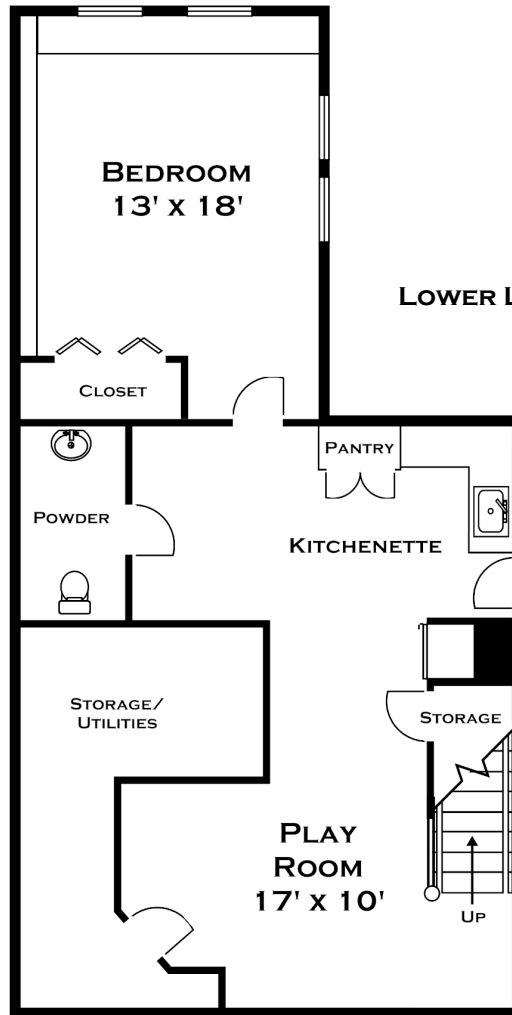
FIRST FLOOR



SECOND FLOOR



LOWER LEVEL



ALL MEASUREMENTS ARE APPROXIMATE AND FOR INFORMATIONAL PURPOSES ONLY—NOT DRAWN TO SCALE



DORENE J HIGGONS
GRAPHICS/CONSULTING
781.724.7306
DORENE.HIGGONS.COM