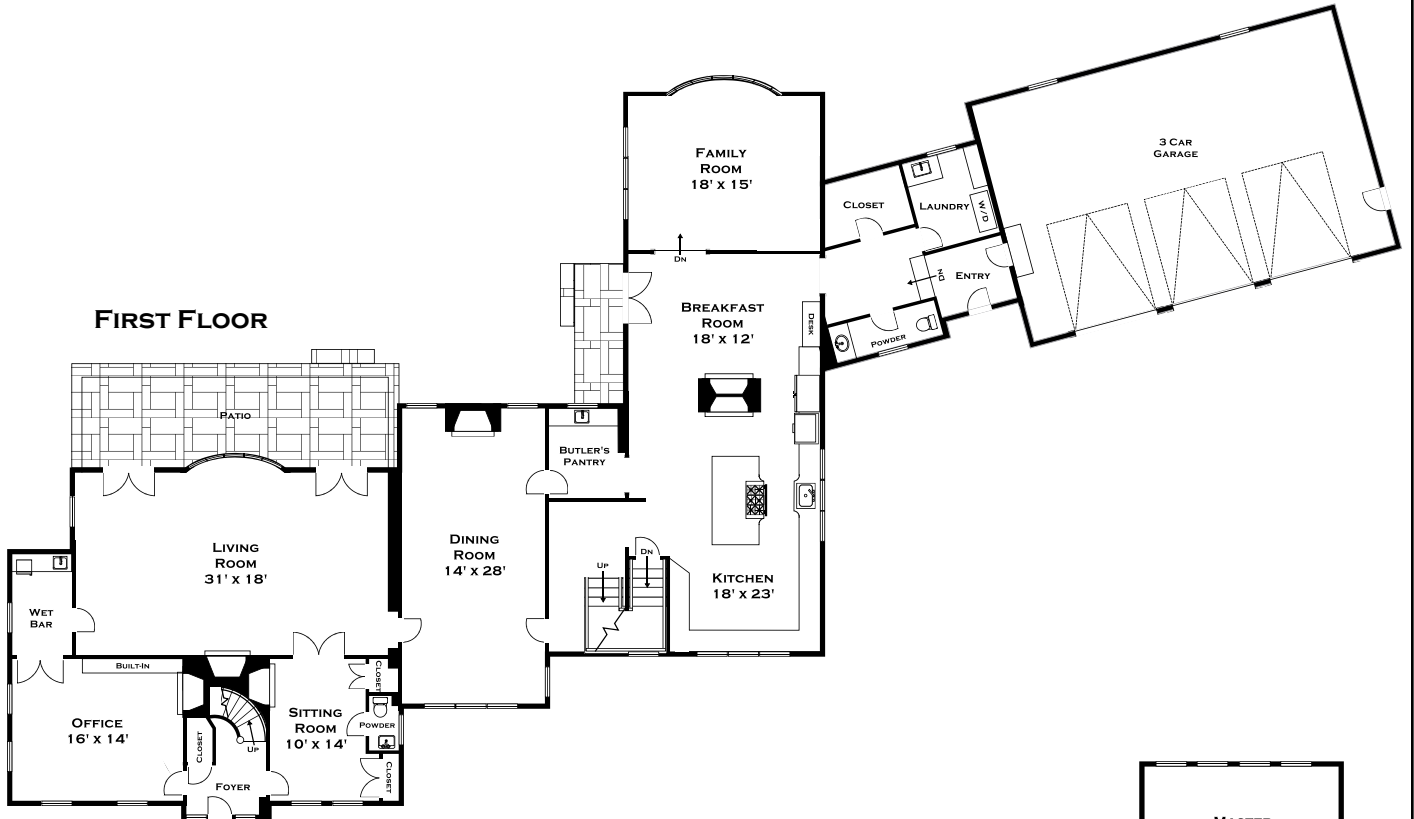
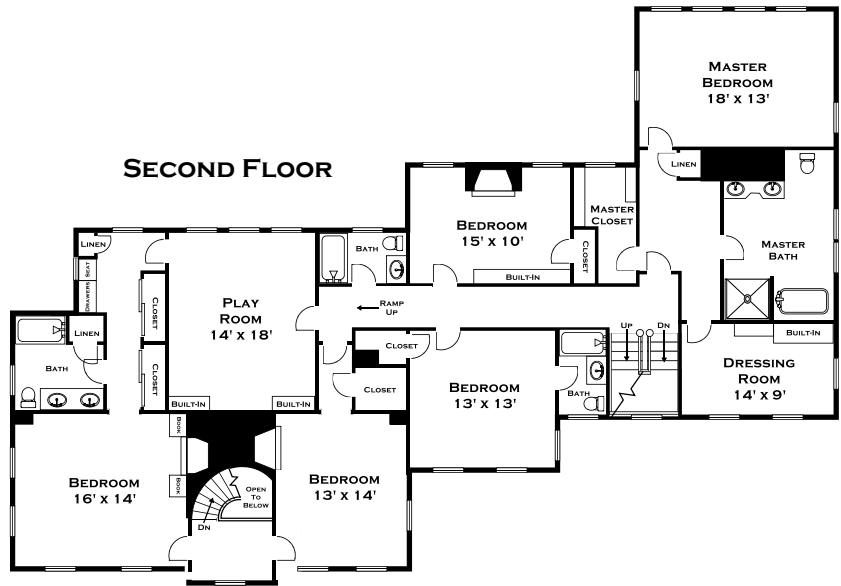


116 PLAIN ROAD, WAYLAND MA

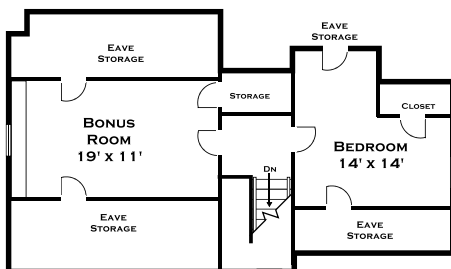
FIRST FLOOR



SECOND FLOOR



THIRD FLOOR



ALL MEASUREMENTS ARE APPROXIMATE AND FOR INFORMATIONAL PURPOSES ONLY - NOT DRAWN TO SCALE



DORENE J HIGGONS
GRAPHICS / CONSULTING
781.724.7306
DORENE.HIGGONS@GMAIL.COM